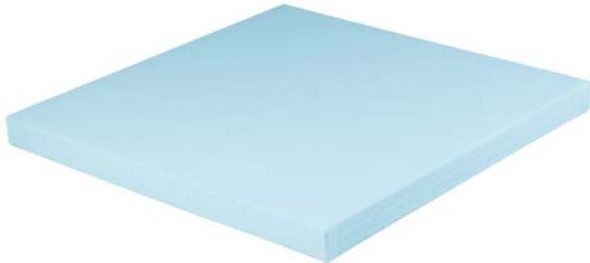


REGUPOL TATAMI LIGHTWEIGHT



REGUPOL TATAMI LIGHTWEIGHT

Construction:

Specially developed composite foam core, robust cover material with rice straw embossing, underside with anti-slip material

Areas of application:

Martial arts (children and youth training)

Dimensions:

1,000 x 1,000 mm

2,000 x 1,000 mm

Strength:

40 mm, 50 mm

Standard:

Meets safety requirements of DIN EN 12503

Advantages:

Phthalate-free upholstery fabric, good stability, sure-footed, non-slip surface, durable, specially adapted damping properties

Colours:

Tokyo Blue, Sky Blue, Dark Blue, Basalt Gray, Yellow, Orange, Red, Light Green, Grass Green, Green and Black

Service:

Product sample service, individual worldwide advice, quality certificates, individual product development, application of prints, cut to size, external certification

Installation:

Loose laying

Colours



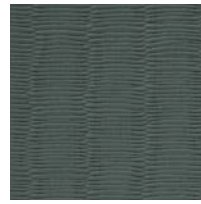
Tokyo Blue



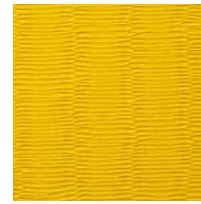
Sky Blue



Dark Blue



Basalt Grey



Yellow



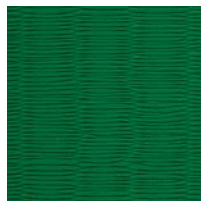
Orange



Red



Light Green



Grass Green



Green



Black